

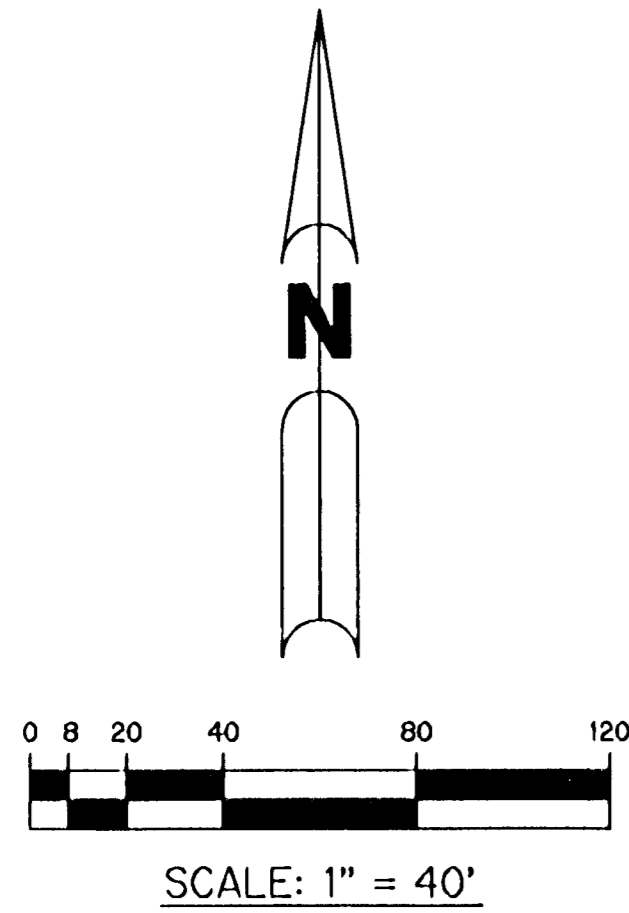
CANYON LAKES - PLAT SIX

BEING A REPLAT OF A PORTION OF TRACTS 17, THROUGH 19, TRACTS 46 THROUGH 51, TRACTS 77 THROUGH 80, AND A PORTION OF A ROAD, DYKE AND DITCH RESERVATION, 30.00 FEET IN WIDTH, ALL LYING WITHIN BLOCK 54, PALM BEACH FARMS COMPANY PLAT NO. 3, ACCORDING TO THE PLAT THEREOF, RECORDED IN PLAT BOOK 2, PAGES 45 THROUGH 54 AND A REPLAT OF TRACT R-1 OF CANYON LAKES - PLAT ONE, ACCORDING TO THE PLAT THEREOF, RECORDED IN PLAT BOOK 101, PAGES 191 THROUGH 207, ALL OF THE PUBLIC RECORDS OF PALM BEACH COUNTY, FLORIDA, LYING IN SECTION 29, TOWNSHIP 45 SOUTH, RANGE 42 EAST, PALM BEACH COUNTY, FLORIDA

SHEET 5 OF 11 MARCH, 2004

THIS INSTRUMENT PREPARED BY
 PERRY C. WHITE, P.S.M. 4213, STATE OF FLORIDA
 LAWSON, NOBLE AND WEBB, INC.
 ENGINEERS PLANNERS SURVEYORS
 420 COLUMBIA DRIVE
 WEST PALM BEACH, FLORIDA 33409
 LB-6674

31

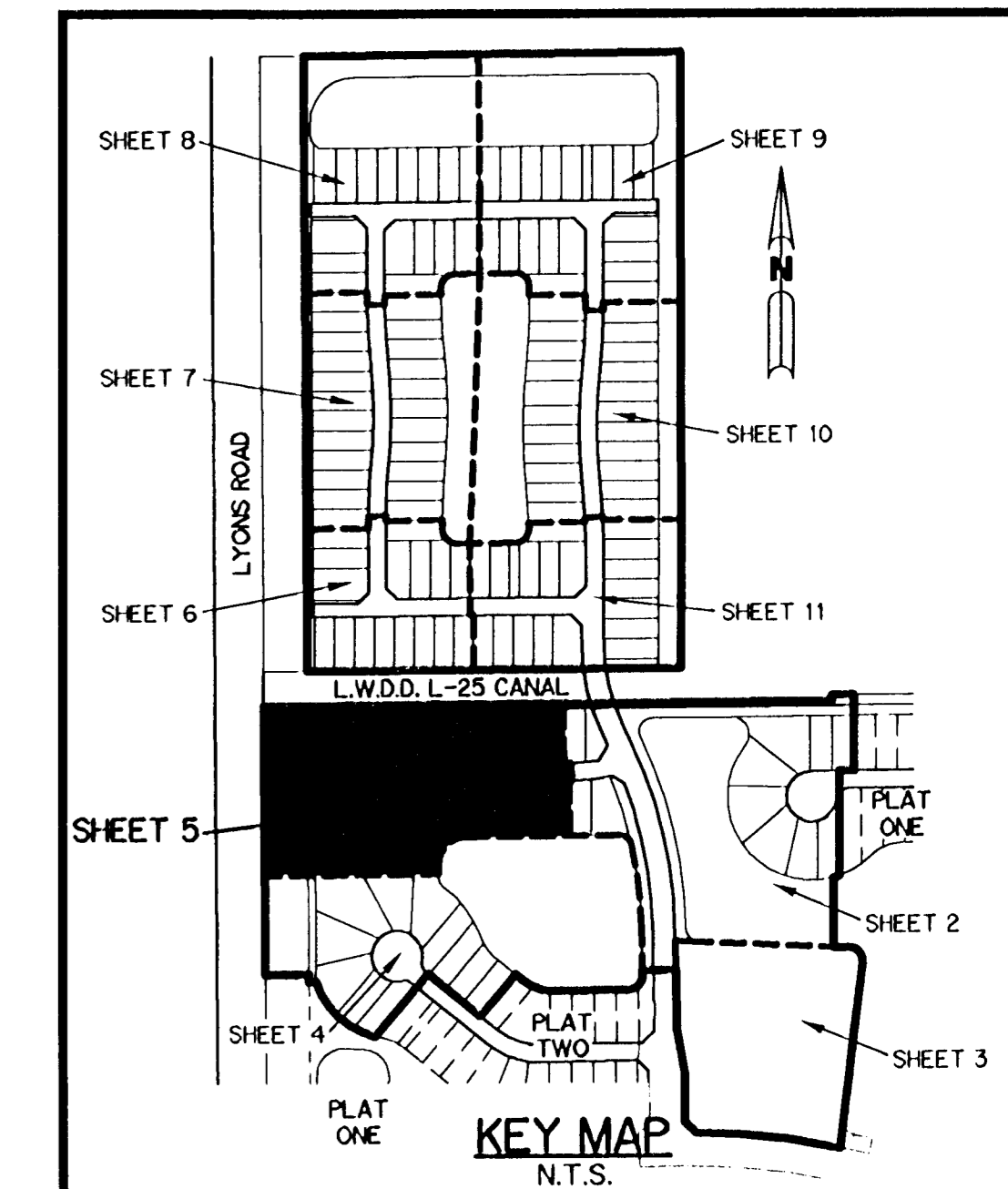
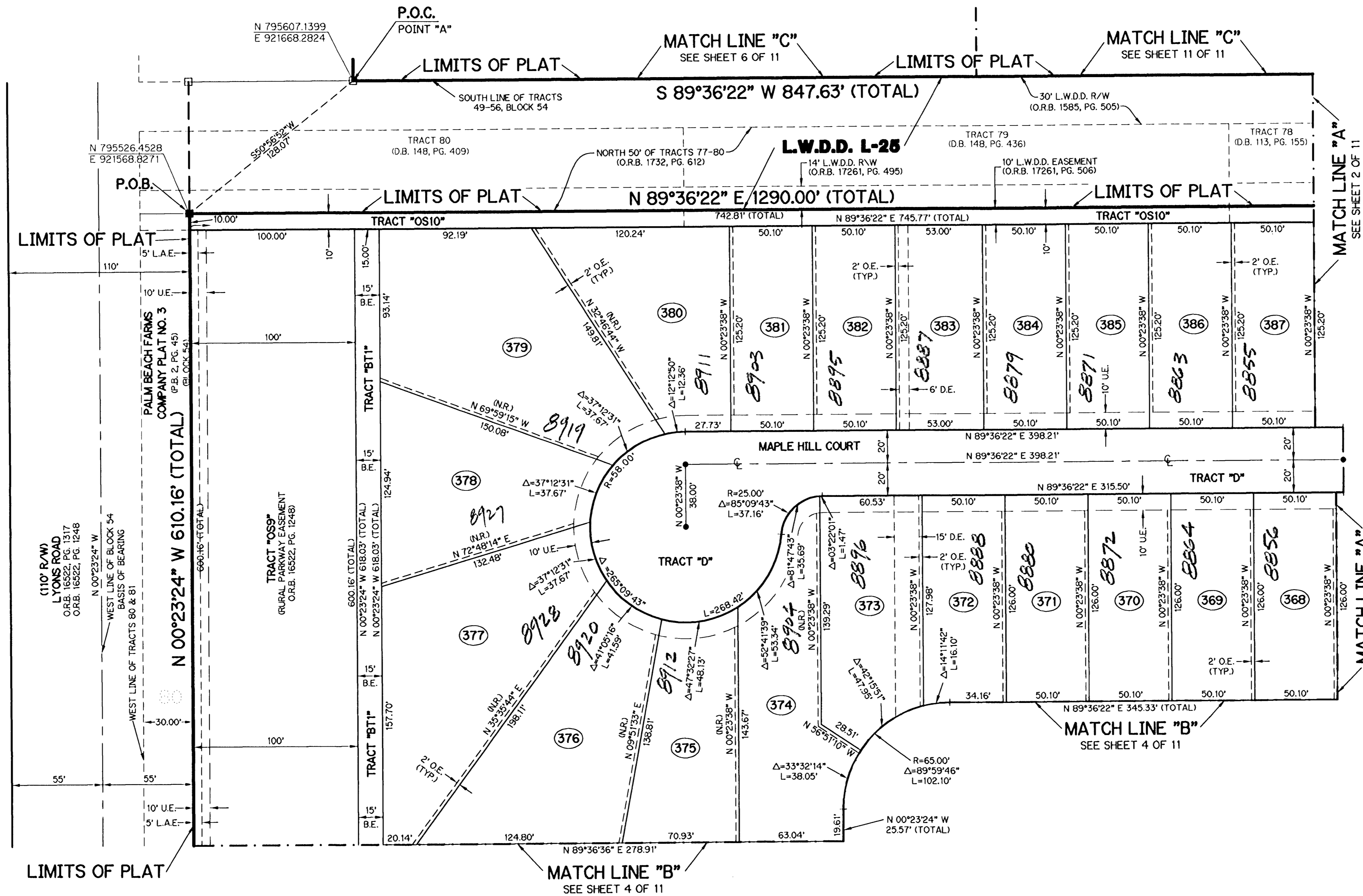


LEGEND:

- - SET PERMANENT REFERENCE MONUMENT, L.B. #6674
- - FOUND PERMANENT REFERENCE MONUMENT, L.B. #6674
- - SET PERMANENT CONTROL POINT, L.B. #6674
- - FOUND PERMANENT CONTROL POINT, L.B. #6674
- Δ - DELTA ANGLE
- B.E. - BUFFER EASEMENT
- CB - CHORD BEARING
- CH - CHORD DISTANCE
- C - CENTERLINE
- D.B. - DEED BOOK
- D.E. - DRAINAGE EASEMENT
- GND. - GROUND
- L - ARC LENGTH
- L.A.E. - LIMITED ACCESS EASEMENT
- L.M.A.E. - LAKE MAINTENANCE ACCESS EASEMENT
- L.M.E. - LAKE MAINTENANCE EASEMENT
- L.W.D.D. - LAKE WORTH DRAINAGE DISTRICT
- N.R. - NOT RADIAL
- N.T.S. - NOT TO SCALE
- O.R.B. - OFFICIAL RECORD BOOK
- P.B. - PLAT BOOK
- P.C. - POINT OF CURVATURE
- P.C.P. - PERMANENT CONTROL POINT
- POS. - PAGES
- P.O.B. - POINT OF BEGINNING
- P.O.C. - POINT OF COMMENCEMENT
- P.R.M. - PERMANENT REFERENCE MONUMENT
- P.S.M. - PROFESSIONAL SURVEYOR AND MAPPER
- P.T. - POINT OF TANGENCY
- R - RADIUS
- RAD. - RADIAL
- R/W - RIGHT-OF-WAY
- TYP. - TYPICAL
- U.E. - UTILITY EASEMENT
- N 100000.0000 - DENOTES STATE PLANE COORDINATES
- E 100000.0000

NOTE:

COORDINATES SHOWN ARE GRID COORDINATES
 DATUM = NAD 83, 1990 ADJUSTMENT AS READJUSTED
 BY PALM BEACH COUNTY IN 1998
 ZONE = FLORIDA EAST ZONE
 LINEAR UNIT = U.S. SURVEY FEET
 COORDINATE SYSTEM = 1983 STATE PLANE
 TRANSVERSE MERCATOR PROJECTION
 ALL DISTANCES ARE GROUND
 SCALE FACTOR = 1.0000227
 PLAT BEARING = GRID BEARING
 NO ROTATION



CANYON LAKES - PL 6
 BOOK 31
 PAGE 185A
 PD
 748
 FOGG NORTH